

Vitality Sheet

| | | |
|--------------------------|---|--------|
| Collection | Vitality | |
| Style Number | 0873V | |
| Welding Rod Style Number | 353VS | |
| Construction | Commercial Homogeneous Sheet | |
| Class / ASTM F1913 | | |
| Finish | ExoGuard® | |
| | U.s. | Metric |
| Overall Thickness | 0.079 in | 2 mm |
| Installation Type | Dry Back | |
| Recommended Adhesive | S150-95 Resilient Tile Spray, 4200 Resilient Tile 4 Gallon, 4200 Resilient Sheet 1 Gallon, 4200 Resilient Sheet 4 Gallon, 2200 Resilient Tile 4 Gallon or 4151 Multi-Use Premium 4 Gallon | |

Packaging

| | | |
|------------------|------------------------|----------------------|
| Actual Roll Size | 6.58 ft w x 65.94 ft l | 2.01 m w x 20.10 m l |
| Area Per Roll | 47.84 sy/roll | 40 sq m/roll |
| Weight Per Roll | 284 lbs | 128.82 kg |



Recommended Installation Method



Reverse

Performance + Testing

| | |
|---|---|
| Residual Indentation (Astm F1914) | Passes |
| Flexibility (Astm F137) | Passes |
| Resistance To Heat (Astm F1514) | Passes |
| Resistance To Light (Astm F1515) | Passes |
| Resistance To Chemicals (Astm F925) | Passes |
| Coefficient Of Friction (Astm D2407, Slip Resistance) | >0.6, meets the recommended static coefficient of friction for ADA walking surfaces and accessible routes |

Test Reports may be included or listed by the manufacturing/inventory style number as opposed to the noted selling style number.

Warranties

15 Year Commercial Limited
[Commercial 15 Year Underbed Bond Warranty](#)

Diversity, Equity & Inclusion

We believe all humans are equal. Individually and collectively, we need to proactively create and promote opportunities that give everybody an equal footing in life. We nurture an environment where every voice and perspective can be heard, and proactively promote accessibility and inclusivity inside our network and beyond. One proof point is our ability to meet the criteria of the Social Fairness pillar of the Cradle to Cradle Product Standard. At Shaw Industries, we promote supplier participation that is reflective of Shaw's diverse customer base and local community. More than 42% of our spend***** is with small and diverse businesses. We believe having a strong Supplier Diversity Program is strategic for bringing more innovation to our businesses and openingnew markets for growth.

Material Health & Environmental Certifications

| | |
|---|--|
| Climate Impact | |
| Environmental Product Declaration (EPD) | 3rd Party Certified in Accordance with ISO 14025, EN 15804, & ISO 21930:2017 |
| Embodied Carbon (Cradle to Gate) | 6.91 Kg Co ₂ /M ² |
| Total Recycled Content | 0% (Pre-Consumer 0% Post-Consumer 0%) |
| Global Product Assessment | FloorScore® Certified |
| | CE Marking (EN 14041) 3rd Party Certified |
| | Country of Origin Imported |

Green Leed Contribution Credit

| | |
|---|--|
| MR Credit: Building Product Disclosure and Optimization Environmental Product Declarations - Option 1: Environmental Product Declaration (EPD) | 3rd Party Certified in Accordance with ISO 14025, EN 15804, & ISO 21930:2017 |
| EQ Credit: Low Emitting Materials Option 1: Product Category Calculations | FloorScore Certified |
| Installation Guidelines | |
| Maintenance Guidelines | |

Please visit www.shawcontract.com for the most current warranty information.

Specifications are subject to nominal manufacturing variance. Material supply and/or manufacturing processes may necessitate changes without notice.

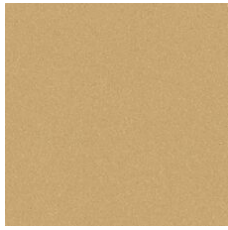
This product is an exclusive design and may not be duplicated in any manner. Use of this design in the creation of another product design is also strictly prohibited.

*****Allowable spend is domestic (US) spend in categories in which we have diverse suppliers from which to choose. Compared to non-allowable spend which includes categories in which we do not have domestic, small or diverse suppliers available to meet our needs.

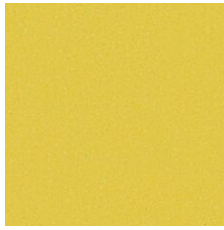
Visit shawcontract.com/testing for more information.

Available Colorways

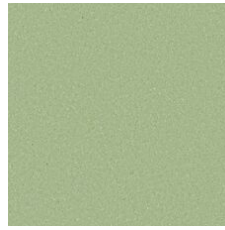
| | | | | | |
|--|---|---|--|---|---|
|  |  |  |  |  |  |
| Rejuvenate 73100 LRV 73.1 Weldrod 05201 | Inspire 73104 Weldrod 05202 | Delight 73110 Weldrod 05206 | Radiate 73112 Weldrod 05207 | Uplift 73120 Weldrod 05226 | Heal 73144 Weldrod 05237 |



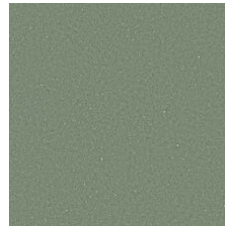
Warmth 73155
Weldrod 05209



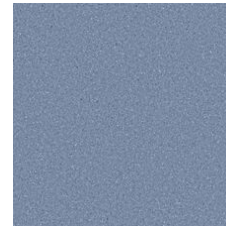
Zest 73201
Weldrod 05241



Flourish 73325
Weldrod 05242



Nourish 73370
Weldrod 05245



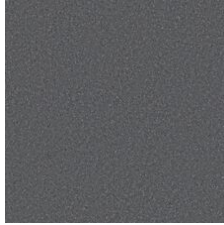
Benefit 73415
Weldrod 05232



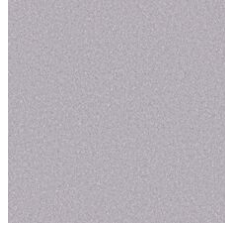
Soothe 73447
Weldrod 05239



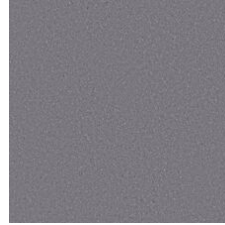
Exhilarate 73485
Weldrod 05240



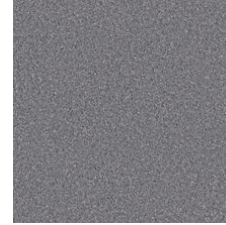
Elevate 73505
Weldrod 05205



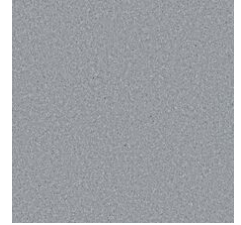
Excite 73515
Weldrod 05203



Restore 73518
Weldrod 05204



Strength 73530
Weldrod 05225



Invigorate 73535
Weldrod 05238



Energy 73675
Weldrod 05219



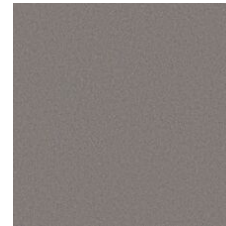
Thrive 73700
Weldrod 05243



Abundance 73740
Weldrod 05230



Comfort 73755
Weldrod 05228



Balance 73761
Weldrod 05244



Robust 73855
Weldrod 05220

